



User Identification and Authentication

User Identification and Authentication delivers an unsurpassed user experience that reduces onboarding timeframes and fraud exposure, while safeguarding the reputation of your brand.

The digital world is fraught with “bad actors” taking advantage of weak or incomplete user authentication and onboarding methods deployed by merchants, financial institutions, gaming vendors, and social networks. From account takeovers (ATO), to opening up fraudulent accounts, to other aspects of identity theft, the [Federal Trade Commission](#) (FTC) reported that consumers lost more than \$8.8B USD to fraud in 2022 in the US alone. Businesses need a comprehensive approach to user authentication that delivers a low-friction

and highly secure onboarding experience that accelerates company revenue.

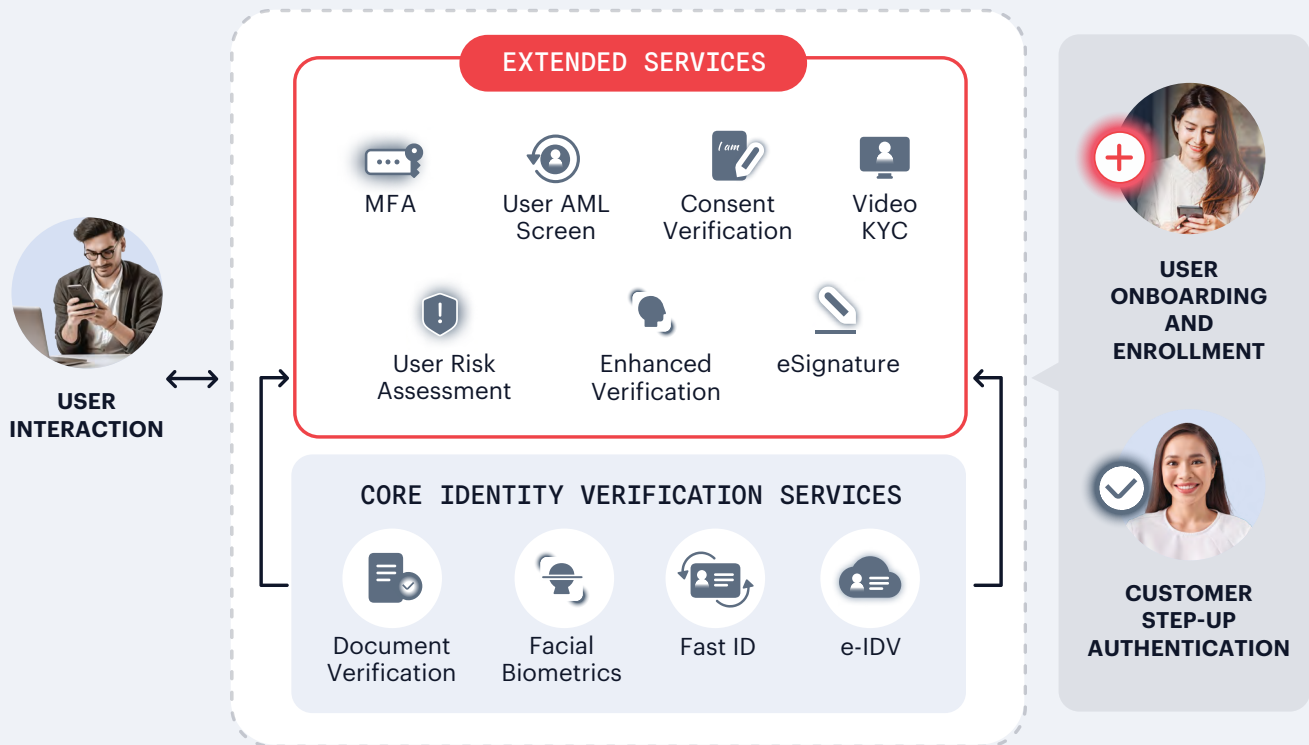
Shufti User Identification and Authentication is the preeminent partner solution for such a challenging environment. Shufti provides enhanced security and compliance while ensuring streamlined onboarding. We accomplish these goals through a combination of flexible document verification, facial biometrics, reusable identity verification, and electronic verification offerings.

WHY SHUFTI

- ▶ Comprehensive product offering document verification, facial biometrics, reusable identity verification and electronic verification technology. No need to use separate vendors.
- ▶ Industry-validated solutions serving clients in complex, emerging markets.
- ▶ Products designed specifically to defeat weaponized fraud technology.
- ▶ Ultimately adaptable microservices approach.
- ▶ 4.6 “Excellent” rating on Trustpilot. 10x user reviews vs. other suppliers.

Shufti User Identification and Authentication

Your key to using a single partner to unlock user safety and security while streamlining the onboarding interaction services experience.



Document Verification

Are you sure those documents are legitimate? From tampered documents to fake documents to AI-generated document fakes, organizations are under constant bombardment by fraudsters.

Shufti Document Verification features an analysis of security components such as the machine-readable zone (MRZ) and holograms, provides anti-spoofing detection through deep-pixel detection, delivers optical character recognition (OCR), and validates personal information across databases.





Facial Biometrics

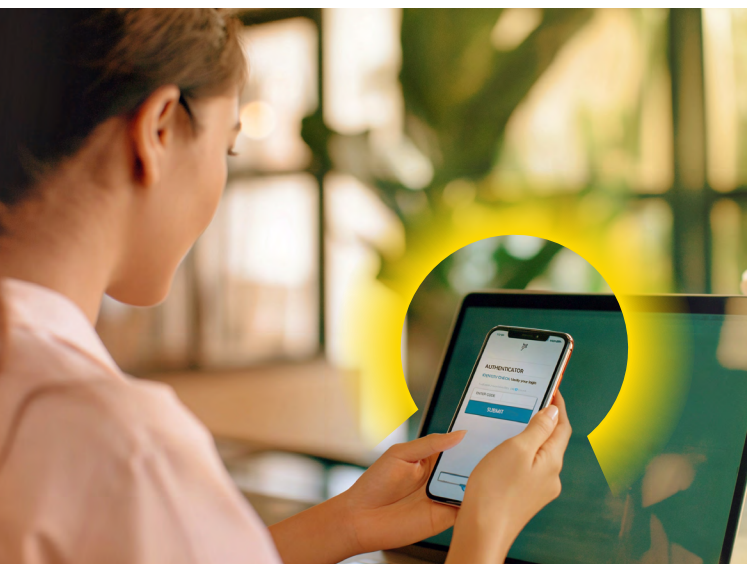
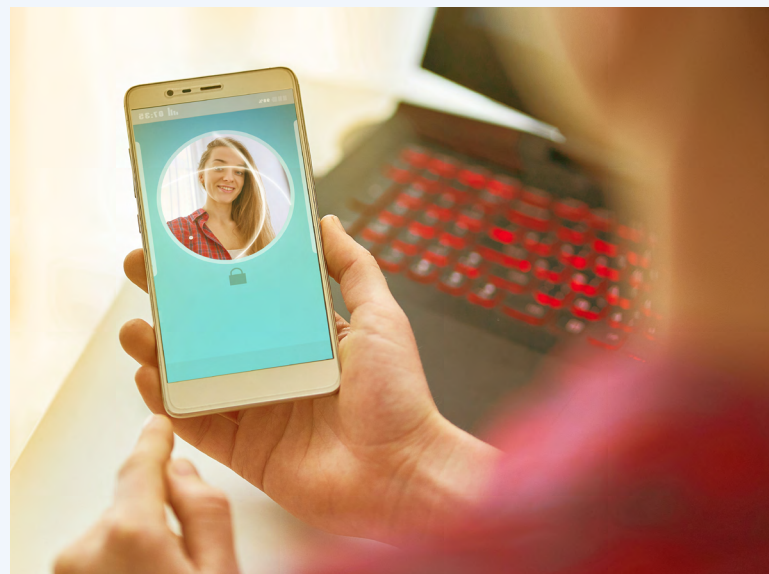
Conventional face biometrics are experiencing unprecedented challenges from deepfakes.

Shufti Facial Biometrics enables liveness detection, facial similarity analysis, and deepfake detection. These components ensure robust security and force fraudsters to seek out easier organizations to penetrate.

Shufti Fast ID

Good customers deserve access to the services they want when they want them. However, when merchants require customers to engage in lengthy onboarding processes and force them to re-authenticate for every interaction, this can lead to enrollment dropouts, customer frustration, and reduced merchant revenue.

Shufti Fast ID enables over 50M users to onboard quicker and engage in more interactions and transactions across platforms.










Electronic Identity Verification (e-IDV)

Quickly authenticating and onboarding individuals is crucial for online merchants and other service vendors. Many organizations make authentication an arduous process for customers, leading to higher abandonment rates and reduced business revenue.

Shufti Electronic Identity Verification streamlines the authentication and onboarding process while enhancing security. Shufti takes document numbers from an ID, performs a face liveness test, and then cross-checks the data against government databases and bank IDs.

Shufti User Identification and Authentication

Online merchants, vendors, service providers, and financial institutions face an uphill battle as bad actors utilize weaponized technology (such as deepfakes) combined with proven fraud techniques to defeat security measures. These gaps can lead to reduced customer satisfaction, increased ATOs, and decreased revenue. As a trusted partner for more than 1000 clients in over 240 countries, Shufti is a proven ally across the globe, even in emerging markets. Let us show you what we can do for you.

EXTENDED SERVICES	
 Multi-factor Authentication	Delivers enhanced security by utilizing both device and email to authenticate customers.
 Video KYC	Enables businesses to authenticate and onboard customers remotely, reducing paperwork and inconvenience.
 Consent Verification	Delivers the ability to perform real-time liveness detection and OCR-based text extraction and validation.
 User AML Screen	Ensures compliance with AML regulations using facial biometrics with zero false positives.
 Enhanced Verification	Verifies addresses by cross-referencing them against global address databases.
 User Risk Assessment	Creates a customizable KYC user journey complete with business-specific fraud rules.
 eSignature	Accelerates compliance and business flexibility with customizable templates and audit tracking.